
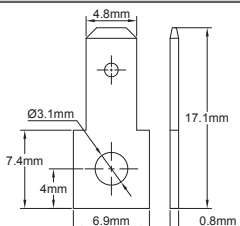

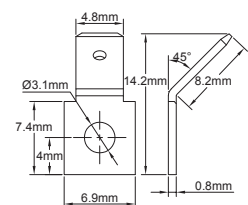

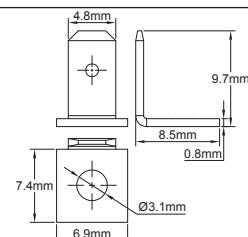

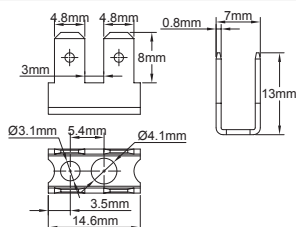

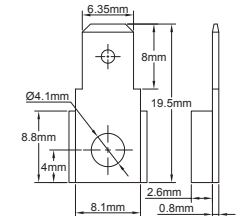

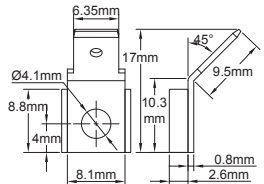

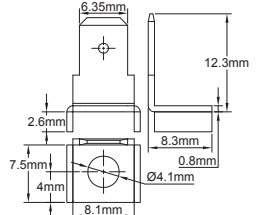


Tabs, terminals, jumpers for connection blocks

Tabs 4.8mm x 0.8mm with 3.1mm hole. These tabs can be mounted on the screw terminals of the BE series terminal blocks with 2.5mm² cross-section.

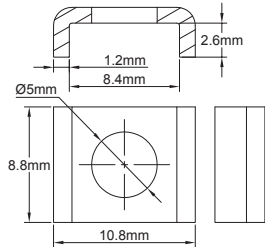
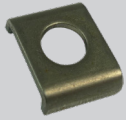
		<p>4.8 x 0.8 flat tabs, can be mounted on all terminals with M3 screws.</p> <table border="1" style="width: 100%; border-collapse: collapse;"> <thead> <tr> <th style="text-align: center;">Material</th> <th style="text-align: center;">References</th> </tr> </thead> <tbody> <tr> <td style="text-align: center;">Un-plated brass</td> <td style="text-align: center;">66ABB0831169040B</td> </tr> <tr> <td style="text-align: center;">Nickel plated brass</td> <td style="text-align: center;">66ABC0831169040B</td> </tr> <tr> <td style="text-align: center;">Nickel plated steel</td> <td style="text-align: center;">66ABS0831169040B</td> </tr> </tbody> </table>	Material	References	Un-plated brass	66ABB0831169040B	Nickel plated brass	66ABC0831169040B	Nickel plated steel	66ABS0831169040B
Material	References									
Un-plated brass	66ABB0831169040B									
Nickel plated brass	66ABC0831169040B									
Nickel plated steel	66ABS0831169040B									
		<p>64.8 x 0.8 tabs, bent 135°, can be mounted on all terminals with M3 screws.</p> <table border="1" style="width: 100%; border-collapse: collapse;"> <thead> <tr> <th style="text-align: center;">Material</th> <th style="text-align: center;">References</th> </tr> </thead> <tbody> <tr> <td style="text-align: center;">Un-plated brass</td> <td style="text-align: center;">66ADB0841169040C</td> </tr> <tr> <td style="text-align: center;">Nickel plated brass</td> <td style="text-align: center;">66ADC0831169040C</td> </tr> <tr> <td style="text-align: center;">Nickel plated steel</td> <td style="text-align: center;">66ADS0831169040C</td> </tr> </tbody> </table>	Material	References	Un-plated brass	66ADB0841169040C	Nickel plated brass	66ADC0831169040C	Nickel plated steel	66ADS0831169040C
Material	References									
Un-plated brass	66ADB0841169040C									
Nickel plated brass	66ADC0831169040C									
Nickel plated steel	66ADS0831169040C									
		<p>4.8 x 0.8 tabs, bent at 90° can be mounted on all terminals with M3 screws.</p> <table border="1" style="width: 100%; border-collapse: collapse;"> <thead> <tr> <th style="text-align: center;">Material</th> <th style="text-align: center;">References</th> </tr> </thead> <tbody> <tr> <td style="text-align: center;">Un-plated brass</td> <td style="text-align: center;">66ACB0831169040D</td> </tr> <tr> <td style="text-align: center;">Nickel plated brass</td> <td style="text-align: center;">66ACC0831169040D</td> </tr> <tr> <td style="text-align: center;">Nickel plated steel</td> <td style="text-align: center;">66ACS0831169040D</td> </tr> </tbody> </table>	Material	References	Un-plated brass	66ACB0831169040D	Nickel plated brass	66ACC0831169040D	Nickel plated steel	66ACS0831169040D
Material	References									
Un-plated brass	66ACB0831169040D									
Nickel plated brass	66ACC0831169040D									
Nickel plated steel	66ACS0831169040D									
		<p>4 x 4.75 QC tab terminals, bent at 90°. Having a hole of 3.1 and a hole of 4.1, they can therefore be mounted on PA66 series BE 2.5mm² terminal blocks and BCA and BCB series ceramic terminal blocks. Attention the use of this accessory can reduce the insulation distances of the terminal blocks.</p> <table border="1" style="width: 100%; border-collapse: collapse;"> <thead> <tr> <th style="text-align: center;">Material</th> <th style="text-align: center;">References</th> </tr> </thead> <tbody> <tr> <td style="text-align: center;">Un-plated brass</td> <td style="text-align: center;">66ACB08CE470142D</td> </tr> <tr> <td style="text-align: center;">Nickel plated brass</td> <td style="text-align: center;">66ACC08CE470142D</td> </tr> <tr> <td style="text-align: center;">Nickel plated steel</td> <td style="text-align: center;">66ACS08CE470142D</td> </tr> </tbody> </table>	Material	References	Un-plated brass	66ACB08CE470142D	Nickel plated brass	66ACC08CE470142D	Nickel plated steel	66ACS08CE470142D
Material	References									
Un-plated brass	66ACB08CE470142D									
Nickel plated brass	66ACC08CE470142D									
Nickel plated steel	66ACS08CE470142D									

6.35 tabs with 4,1mm hole. They are used as replacements for the saddle on ceramic terminal blocks of the BCA and BCB series. They are not compatible with the BCC series. They retain the ability to tighten a conductor under the tab.

		<p>6.35 tabs with 4.1 hole, flat. Material: 304 stainless steel, or nickel plated steel.</p> <table border="1" style="width: 100%; border-collapse: collapse;"> <thead> <tr> <th style="text-align: center;">Material</th> <th style="text-align: center;">References</th> </tr> </thead> <tbody> <tr> <td style="text-align: center;">304 stainless steel</td> <td style="text-align: center;">66AE40841197006B</td> </tr> <tr> <td style="text-align: center;">Nickel plated steel</td> <td style="text-align: center;">66AES0841197006B</td> </tr> </tbody> </table>	Material	References	304 stainless steel	66AE40841197006B	Nickel plated steel	66AES0841197006B
Material	References							
304 stainless steel	66AE40841197006B							
Nickel plated steel	66AES0841197006B							
		<p>6.35 tabs with 4.1 hole, bent at 135°. Material: 304 stainless steel, or nickel plated steel.</p> <table border="1" style="width: 100%; border-collapse: collapse;"> <thead> <tr> <th style="text-align: center;">Material</th> <th style="text-align: center;">References</th> </tr> </thead> <tbody> <tr> <td style="text-align: center;">304 stainless steel</td> <td style="text-align: center;">66AG4084116397006C</td> </tr> <tr> <td style="text-align: center;">Nickel plated steel</td> <td style="text-align: center;">66AGS084116397006C</td> </tr> </tbody> </table>	Material	References	304 stainless steel	66AG4084116397006C	Nickel plated steel	66AGS084116397006C
Material	References							
304 stainless steel	66AG4084116397006C							
Nickel plated steel	66AGS084116397006C							
		<p>6.35 tabs with 4.1 hole, bent at 90°. Material: 304 stainless steel, or nickel plated steel.</p> <table border="1" style="width: 100%; border-collapse: collapse;"> <thead> <tr> <th style="text-align: center;">Material</th> <th style="text-align: center;">References</th> </tr> </thead> <tbody> <tr> <td style="text-align: center;">304 stainless steel</td> <td style="text-align: center;">66AF40841197006D</td> </tr> <tr> <td style="text-align: center;">Nickel plated steel</td> <td style="text-align: center;">66AFS0841197006D</td> </tr> </tbody> </table>	Material	References	304 stainless steel	66AF40841197006D	Nickel plated steel	66AFS0841197006D
Material	References							
304 stainless steel	66AF40841197006D							
Nickel plated steel	66AFS0841197006D							

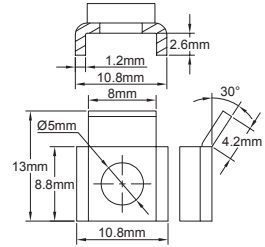
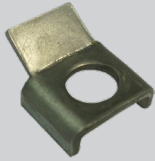
Because of permanent improvement of our products, drawings, descriptions, features used on these data sheets are for guidance only and can be modified without prior advice

Saddles for M4 screw terminals



Saddle for M4 screws, 5mm hole, to be mounted on BCA, BCB and BCC series ceramic terminal blocks.

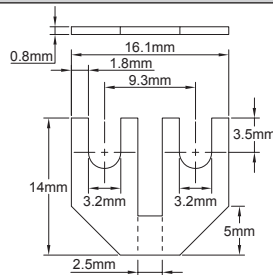
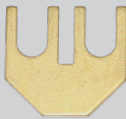
Material	References
304 stainless steel	66AS412501A1014A



Jumper for M4 screws with anti-shear protection, 5mm hole, to be mounted on terminals of ceramic terminal blocks BCA, BCB series; Incompatible with BCC series.

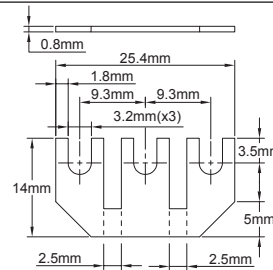
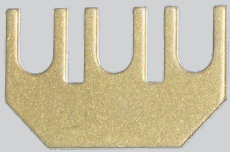
Material	References
304 stainless steel	66AR412501A1024A

Jumpers. They allow to easily connect 2 or 3 adjacent terminals



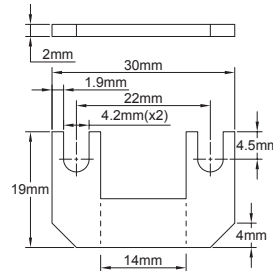
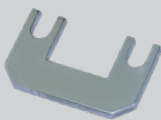
Two ways, 9.3 mm pitch, compatible with the BE 2.5mm² series.

Material	References
Un-plated brass	66AJB0832293041B



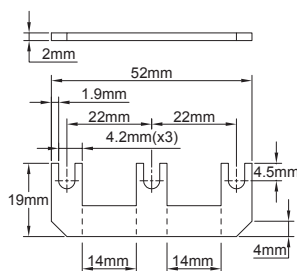
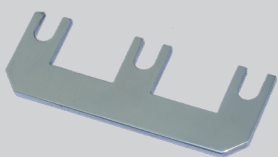
3 ways, 9.3 mm pitch, compatible with the BE 2.5mm² series.

Material	References
Un-plated brass	66AJB0832393042B



Two ways, 20 mm pitch, compatible with the BCA and BCB series.

Material	References
304 stainless steel	66AJ420422B0043B



3 ways, 20 mm pitch, compatible with the BCA and BCB series.

Material	References
304 stainless steel	66AJ420423B0044B